

Technical data sheet

Type 802Z Non-return valve W System

Applications and special features



- Operates in any position
- Easy to install and dismantle , minimum occupation of space
- Low headloss
- Does not generate hammering
- Closing system : disc with parabolic edges with return spring ; lateral guiding by 3 or 4 ribs (ND15 to 100)
- Closing system with back axial guiding and return spring (ND 125 to 200)
- Metal/metal sealing (machined trim)
- Using these checkvalves on networks equipped with piston pumps or compressors is not recommended.

Technical description

DN "	mm	PN	PFA in bar	PS in bar				Cat.	References	Vvs-nr
				L1	L2	G1	G2			
1 ^{1/4}	32	6/16	16	16	16	16	16	I	149B 2413Z	
1 ^{1/2}	40	6/16	16	16	16	16	16	I	149B 2414Z	
2	50	6/16	16	16	16	16	16	I	149B 2415Z	
2 ^{1/2}	65	6/16	16	16	16	15	16	I	149B 2416Z	
3	80	6/16	16	16	16	12	16	I	149B 2417Z	
4	100	6/16	16	16	16	10	16	I	149B 2418Z	
5	125	6/16	16	16	16	0,5	16	I	149B 2439Z	
6	150	6/16	16	13	16	0,5	16	I	149B 2440Z	
8	200	6/16	16	10	16	0,5	16	I	149B 2441Z	

Important notice:

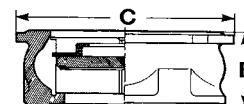
The indicated pressure for the different categories of fluids (L1/L2/G1/G2) is under no condition a guarantee of use. Therefore, it is essential to validate the use of products under given operating conditions.

- **Connections** : between flanges PN see table
- **Acceptable pressure PFA in water** : (conveyance, distribution and draining) : see the table
- **Acceptable maxi pressure PS other fluids** : see the table
- **θ** Mini. -10 °C
Maxi. 230 °C
- **Mediums** : Clear liquids
- **Leakage rate** : according to EN 12266-1 rate E
- **Approvals** : ACS PED 97/23/CE
- **International construction Standards** :
In accordance with CE directive 97/23/CE
Connections EN 1092-2
Connections according to ASA B16.1
class 125RF
Dimensions according to EN 558.1 serie 49

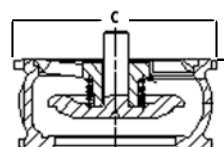
Overall dimensions

DN		B	C - PN6	C - PN10/16/ ASA150	Weight
"	mm	mm	mm	mm	kg
1 ^{1/4}	32	28	78	84	0,35
1 ^{1/2}	40	31,5	88	94	0,52
2	50	40	98	109	0,73
2 ^{1/2}	65	46	118	129	1,52
3	80	50	134	144	2,17
4	100	60	154	162	3,35
5	125	90	-	192	8,55
6	150	106	-	218	12,70
7	175	125	-	248	21,60
8	200	140	-	273	23,40

DN 1"1/4 to 4"



DN 5 to 8"

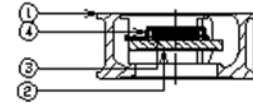


Technical data sheet **Fig. 802Z** - Non-return valve

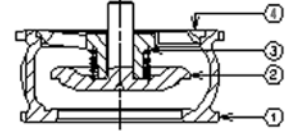
Spare parts list and materials

N°	Description	Materials	EURO	ANSI
1	CASING DN 32 to 200	Bronze	CuSn5Zn5Pb2-C	ASTM B 505
2	CLOSING SYSTEM DN 32 to 100	Stainless steel	X2CrNiMo17-12-2	AISI 316L
	DN125 to 200	Bronze	CuSn5Zn5Pb2-C	ASTM B 505
3	SPRING	Stainless steel	X10CrNi18-8	AISI 302
4	STOP / GUIDE DN 32	Stainless steel	X2CrNiMo17-12-2	AISI 316L
	DN40 to 100	Stainless steel	X2CrNi18.9	AISI 304L
	DN125 to 200	Bronze	CuSn5Zn5Pb2-C	ASTM B 505

DN 1"1/4 to 4"



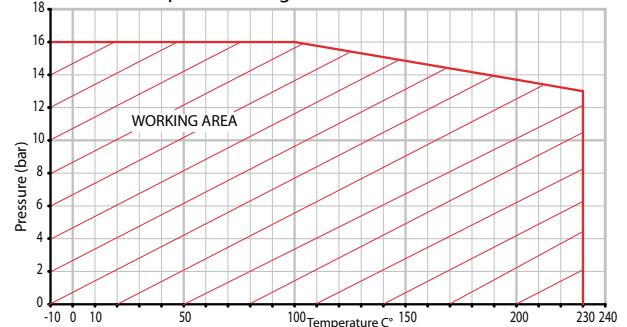
DN 5 to 8"



Working principle

DN	#	mm	Opening pressure mm/WC				Kv	ζ
			↑	↓	↔	Without spring		
1 ^{1/4}	32	190	130	160	30	18,00	5,0	
1 ^{1/2}	40	200	120	160	40	28,00	5,1	
2	50	210	110	155	50	40,10	6,1	
2 ^{1/2}	65	210	100	155	55	72,50	5,3	
3	80	226	95	160	65	111,00	5,2	
4	100	235	75	155	80	182,00	4,7	
5	125	335	75	205	130	302,00	4,2	
6	150	360	70	215	145	370,00	5,8	
7	175					475,00	6,5	
8	200	515	105	310	205	546,00	8,4	

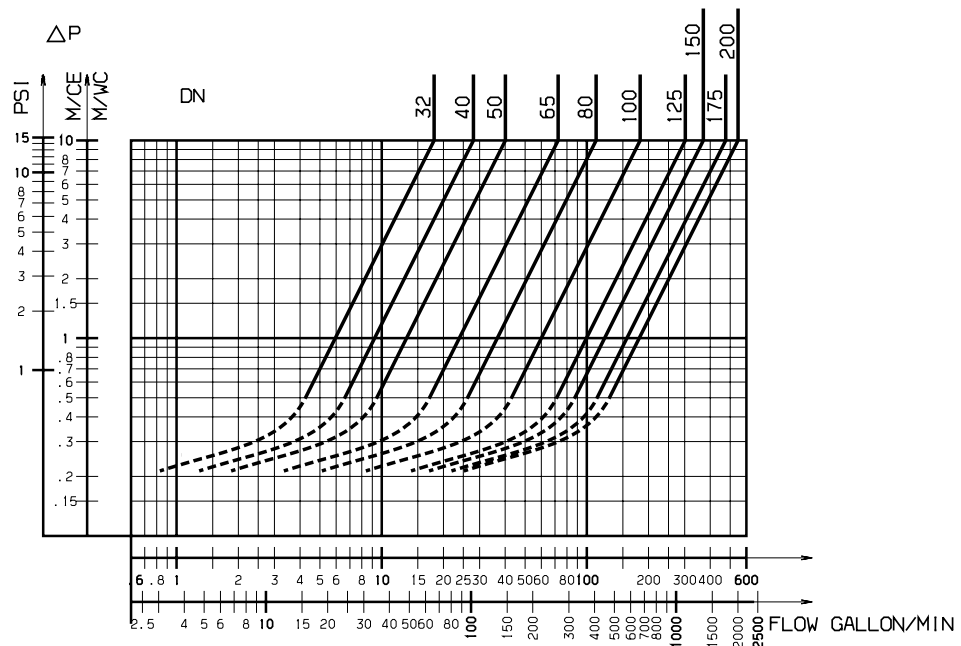
Pressure/Temperature Diagram



Directions for use

Solid line : Valve completely opened

Dotted line : Opening stage of valve



Socla can accept no responsibility for possible errors in catalogue, brochures and other printed material. Socla reserve the right to alter its products without notice. This also applies to products already agreed. All trademarks in this material are the property of the respective companies. All right reserved.

Socla SAS

365 rue du lieutenant Putier
71530 VIREY LE GRAND
Postal address : CS 10273
71107 CHALON SUR SAONE Cedex

Tel : 33 3 85 97 42 52
Fax : 33 3 85 97 97 42
<http://www.socla.com>
e-mail: commerfr@socla.com