

## Technical data sheet

### Type 508F

Non return valve  
System B


#### Applications and special features



- Vertical and horizontal position (position of the ball housing below the axis of the pipe).
- Minimum head loss
- Silent, robust
- Non incrustating materials
- Closing system : floating ball
- Sealing ensured by elastomer seal fixed on the seat
- For use as an air-vent

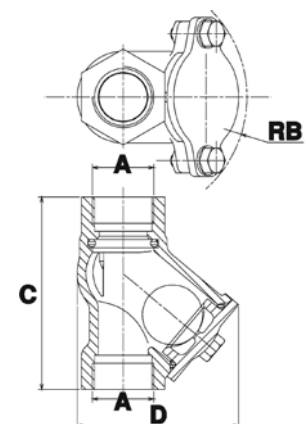
#### Technical description

DN		PFA in bar	References	Vvs-nr
"	mm			
1	25	10	149B 3212	
1 <sup>1/4</sup>	32	10	149B 3213	
1 <sup>1/2</sup>	40	10	149B 3214	
2	50	10	149B 3215	
2 <sup>1/2</sup>	65	10	149B 3216	

- **Connection** : Female/female, BSP or NPT thread
- **Permissible operating pressure PFA - water-** (for supply, distribution and disposal of water) : See table
- **θ**                   Mini. -10 °C  
                          Maxi. 80 °C
- **Mediums** : Waste water
- **Approval** : 
- **International construction Standards** :  
Thread connection according to NF E 03-005 ISO228

#### Overall dimensions

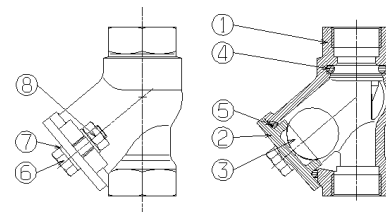
"	A		RB	C	D	Weight
	mm		mm	mm	mm	kg
1	26/34		76	114	95	1,3
1 <sup>1/4</sup>	33/42		85	132	110,5	1,9
1 <sup>1/2</sup>	40/49		93	145	121	2,45
2	50/60		107	173,5	144	3,5
2 <sup>1/2</sup>	66/76		127	200	174,5	5,9



## Technical data sheet Type 508F - Non return valve

### Spare parts list and materials

Nb	Description	Materials	EURO	ANSI
1	CASING	Cast iron + epoxy ext	EN-GJL-250	ASTM A 48 35 B
2	CAP	Cast iron + epoxy ext	EN-GJL-250	ASTM A 48 35 B
3	BALL	Resin + epoxy		
4	SEAL	NBR (nitrile)		
5	SEAL	NBR (nitrile)		
6	SCREW	Stainless steel	X5Cr-Ni18-10	AISI 304
7	WASHER	Stainless steel	X5Cr-Ni18-10	AISI 304
8	NUT	Stainless steel	X5Cr-Ni18-10	AISI 304

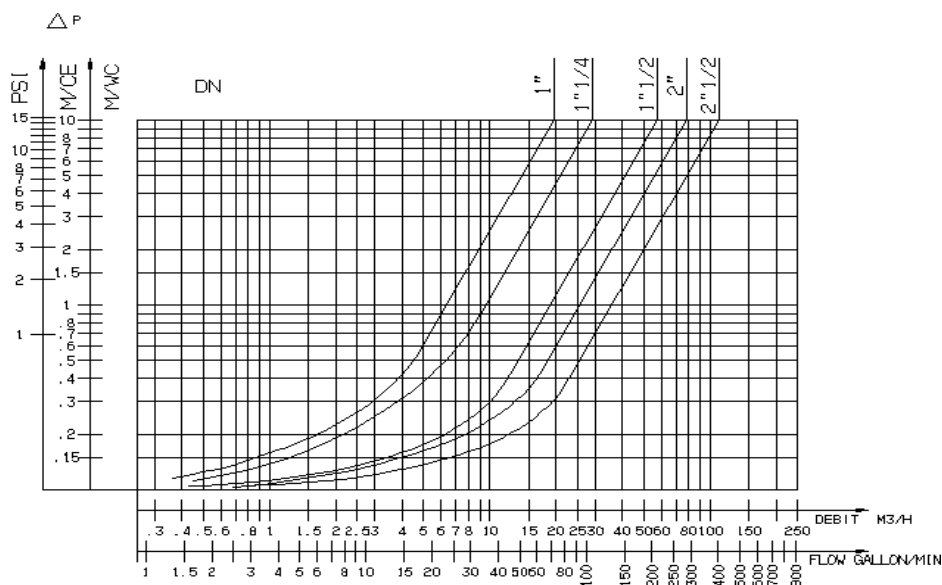


### Working principle

DN		Kv		ζ
"	mm		m <sup>3</sup> /H	
1	25	19,6		1,6
1 <sup>1/4</sup>	32	29,4		1,9
1 <sup>1/2</sup>	40	57,8		1,2
2	50	78,3		1,6
2 <sup>1/2</sup>	65	110,4		2,3

#### Directions for use :

- Solid line : Valve completely open
- Dotted line : opening stage of valve



Socla can accept no responsibility for possible errors in catalogue, brochures and other printed material. Socla reserve the right to alter its products without notice. This also applies to products already agreed. All trademarks in this material are the property of the respective companies. All right reserved.

### Socla SAS

365 rue du lieutenant Putier  
71530 VIREY LE GRAND  
Postal address : BP 10273  
71107 CHALON SUR SAONE Cedex

Tel : 33 3 85 97 42 52  
Fax : 33 3 85 97 97 42  
<http://www.socla.com>  
e-mail: [commerfr@socla.com](mailto:commerfr@socla.com)